



*SERVING THE TRANSPORTATION INDUSTRY SINCE 1977*

# PRODUCT CATALOG

PARTS TESTED TO MEET AND EXCEED OEM SPECIFICATIONS



*"THE LARGEST PROVIDER OF PARTS AND SERVICE TO THE COMMERCIAL VEHICLE MARKET."*

## INDEX

AIR BRAKE AND WHEEL	PAGE 4
AIR AND ELECTRICAL SYSTEMS	PAGES 5-6
AIR CONDITIONING PARTS	PAGE 7
CAB AND BODY PARTS	PAGES 8-12
DRIVE LINE AND STEERING	PAGES 13-14
ENGINE PARTS	PAGES 15-16
EXHAUST PARTS	PAGES 17
FLUIDS/GREASES	PAGE 18
LIGHTING	PAGES 19-20
SAFETY	PAGE 21
SUSPENSION	PAGES 22-23
SHOP SUPPLIES	PAGE 24
SHOP TOOLS	PAGES 25-26
TRAILER PARTS	PAGES 27-28
TRAILER LOAD SECUREMENT	PAGE 29
MISC	PAGE 30
MOBILEYE COLLISION AVOIDANCE SYSTEM	PAGE 31

87104

☐ Compare



87105

☐ Compare



87100

☐ Compare



87101

☐ Compare



87170

☐ Compare



87190

☐ Compare



87191

☐ Compare



87192

☐ Compare



87171

☐ Compare



87172

☐ Compare



87173

☐ Compare



87052

☐ Compare



87020

☐ Compare



87113

☐ Compare



87023

☐ Compare



87180

☐ Compare



87110

☐ Compare



87111

☐ Compare



87182

☐ Compare



87112

☐ Compare



87181

☐ Compare



81-2112

☐ Compare



81-2115

☐ Compare



81-2212

☐ Compare



81-2212-V

☐ Compare



81-2215

☐ Compare



81-2215-V

☐ Compare



81-2215-DS

☐ Compare



81-3212

☐ Compare



81-3212-GRP

☐ Compare



81-3215

☐ Compare



81-0001-SR

☐ Compare



81-0001-SBR

☐ Compare



81-0011-SR

☐ Compare



81-0001-SBRS

☐ Compare



81-0001-R

☐ Compare



81-0001-38R

☐ Compare



81-0001-B

☐ Compare



81-0001-38B

☐ Compare



81-0001

☐ Compare



81-0008

☐ Compare



81-0008-B

☐ Compare



81-0008-R

☐ Compare



81-0012

☐ Compare



81-0012-R

☐ Compare



81-0012-B

☐ Compare



81-0012-GH

☐ Compare



81-0015

☐ Compare



81-0015-R

☐ Compare



81-0015-B

☐ Compare



81-0015-GH

☐ Compare



81-0015-40

☐ Compare



81-0015-40R

☐ Compare



81-0015-40B

☐ Compare



81-0020

☐ Compare



81-0020-R

☐ Compare



81-0020-B

☐ Compare



81-0054

☐ Compare





### AIR BRAKE AND WHEEL

BRAKE SHOE KITS



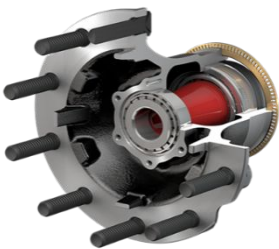
BRAKE DRUMS



OEM SLACK ADJUSTERS



OEM TRACTOR HUBS



CAMSHAFTS



WHEEL SEALS



BEARINGS & RACES



CAMSHAFT REPAIR KITS



HUB CAPS



SPRING BRAKES



WHEEL NUTS



## Brake drums

STEER AXLE	CROSS REF	BRAKE SIZE	DIMENSION	APPLICATION	BRAKE SHOES
10081828	3721AX	15" X 4"	15 X 8.79	MULTI	1308, 1443, 4702,
10009920	3800X	15" X 4"	15 X 9.18	FRT	4702
10014756	3758X	16.5" X 5"	16.5 X 9.37	FRT/VOLVO	4720,4719
10020147	3710X	16.5" X 5"	16.5 X 9.04	PACCAR,NAV	4719,4720
10033071	3687X	16.5" X 6"	16.5 X 9.74	MULTI	4715

DRIVE AXLE	CROSS REF	BRAKE SIZE	DIMENSION	APPLICATION	BRAKE SHOES
10009830	3600AX	16.5" X 7"	16.5 X 10.59	MULTI	4707,4709
8732B	3922X	16.5" X 7"	16.5 X 10.59	VALUE	4707,4709
10080760	3782X	16.5" X 8"	16.5 X 11.06	REFUSE	4718
10012097	3807X	16.5" X 8.62"	16.5 X 11.49	MULTI	4726,4711

TRAILER	CROSS REF	BRAKE SIZE	DIMENSION	APPLICATION	BRAKE SHOES
3887	63680	12.25" X 7.5"	12.25 X 11.22	17.5 TIRES	4692(HXS),4591

## AIR AND ELECTRICAL SYSTEMS

### OEM AIR DRYERS



**MERITOR WABCO**

### AIR BRAKE TUBING



**VELVAC**  
In the Parking Line Since 1938

### OEM AIR GOVERNORS



**Bendix**

### OEM AIR COMPRESSORS



**Bendix**

### OEM ABS WHEEL SENSORS



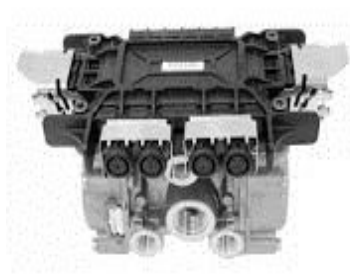
**MERITOR WABCO**

### AIR FITTINGS



**VELVAC**  
In the Parking Line Since 1938

### OEM ABS VALVES



**MERITOR WABCO**

### OEM BRAKE VALVES



**Bendix**

### STARTERS & ALTERNATORS



**Delco Remy**



**MERITOR**

### BATTERIES



**Deka**  
BATTERIES

### BATTERY CABLES AND CONNECTORS



**Grote**  
The first name in vehicle safety systems.



### AIR AND ELECTRICAL SYSTEMS

ABS ELECTIRCAL & AIR ASSEMBLIES



COILED AIR LINES



MISC ELETRICAL



ELECTRICAL WIRE



RUBBER AIR LINES



TRAILER CONNECTORS



ABS POWER CORDS



POGO STICKS



FUSES



SWITCHES



PUSH/PULL VALVES



ZIP TIES



## AIR CONDITIONING PARTS

### **OEM** A/C COMPRESSORS



### CONDENSORS



### HEATER CORES



### EVAPORATORS



### **OEM** DRIERS



### EXPANSION VALVES



### ORPHUS TUBES



### BLOWER MOTORS



### THERMOSTATS, SWITCHES, RESISTERS



### CAB AND BODY PARTS

#### VEHICLE SPECIFIC HEADLIGHT AND FOG LIGHT ASSEMBLIES



- DIRECT OEM REPLACEMENT FOR A PROPER FIT EVERY TIME
- PLUG AND PLAY - NO PROGRAMING NECESSARY
- DURABLE PLASTIC PROTECTS AGAINST WEATHER AND ROAD CONDITIONS
- AVAILABLE FOR THE MOST POPULAR MAKES AND MODELS

#### DASH AIR VENTS

#### HEADLIGHT BEZELS

#### VEHICLE SPECIFIC GRILLES



#### TURN SIGNAL SWITCHES

#### SHIFTER KNOBS

#### SEATS



**Grote**  
The first name in  
vehicle safety systems®

**Bostrom**  
SEATING



## CAB AND BODY PARTS

### VEHICLE SPECIFIC FLUID/COOLANT RESERVIORS



FLUID RESERVIOR CAPS

LOCKING FUEL CAPS

### VEHICLE SPECIFIC/GENERIC MIRRORS



REPLACEMENT  
MIRROR GLASS

MIRROR MOTORS



### FUEL TANK STRAPS AND STEPS



### MIRROR CONTROL SWITCHES



### MIRROR COVERS



### CAB AND BODY PARTS

DOOR HANDLES



DOOR SWITCHES



HOOD CABLES/SPRINGS



HOOD GUIDES/LATCHES



DOOR LATCHES



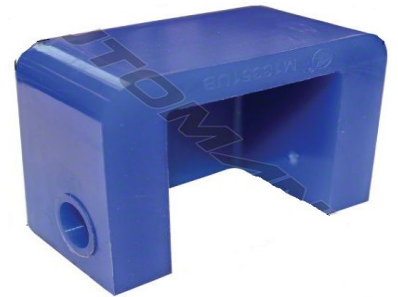
HINGE ASSEMBLIES



HOOD PIVOT BUSHINGS



HOOD BUMPERS



DOOR STRIKER PINS



DASH CONTROL VALVES/KNOBS



HOOD PIVOT ASSEMBLIES



WIPER ARMS/BLADES





\*USE OF OTHER MANUFACTURER'S NAMES, PART NUMBERS, OR TRADEMARKS ARE SOLELY USED FOR INFORMATIONAL/IDENTIFICATION PURPOSES.

## CAB AND BODY PARTS

### REAR FENDERS



### MUD FLAP HANGERS



**BettsHD®**  
Parts for the Long Haul®

### CHROME BUMPERS/VISORS



### CHROME STACKS



### MUDFLAPS



### MUDFLAP WEIGHTS



### LIMITED SECURITY RACKS



### ALUMINUM WHEELS



### STEERING WHEELS



### HOODS



### CAB AND BODY PARTS

LUG NUT COVERS



HYDRAULIC RESERVOIRS



ABS WHEEL COVERS FRONT/REAR



TOP PLATES



TOP PLATE REBUILD KITS



STEP/BATTERY BOXES



TRUMPETS



Q

CAB MOUNTS/BAGS



FUEL SENDING UNITS



SLEEPER MATRESSES



\*USE OF OTHER MANUFACTURER'S NAMES, PART NUMBERS, OR TRADEMARKS ARE SOLELY USED FOR INFORMATIONAL/IDENTIFICATION PURPOSES.

## DRIVE LINE AND STEERING

### U-JOINTS



### YOKES



### CENTER BEARINGS



### DRIVESHAFT REPAIR



### REBUILT TRANSMISSIONS



### REBUILT DIFFERENTIALS



### TRANSMISSION MOUNTING KITS



### NEW CLUTCHES



### NEW FLYWHEELS





### DRIVE LINE AND STEERING

KING PINS



**STEMCO  
KAISER**

TIE ROD ENDS



POWER STEERING  
PUMPS



STEERING SECTORS



DRAG LINKS



PTOs



CROSS TUBES



### AXLE ALIGNMENT SERVICES

STATE OF THE ART  
STEMCO AXLE  
ALIGNMENT  
MACHINE



QUICKLY AND  
ACURATELY  
MEASURES ALL THE  
AXLES FOR PERFECT  
ALIGNMENT

**STEMCO®**  
A Higher Standard of Performance.™

## ENGINE PARTS

### **NEW** AND REBUILT TURBOCHARGERS



**HOLSET**<sup>®</sup>  
TURBOCHARGERS



**MAHLE**  
*Driven by performance*



**DORMAN**<sup>®</sup>



### **NEW** EGR COOLERS AND VALVES

### RADIATORS AND CHARGE AIR COOLERS



### EGR GASKET KITS



### TURBO CONTROL MODULES



### CHARGE AIR HOSES AND CLAMPS



### REAR MAIN SEALS



### FILTERS





### ENGINE PARTS

#### **NEW** PISTONS, INFRAME KITS, GASKETS



#### INJECTORS



**ProDiesel®**

#### ENGINE SENSORS



#### **NEW** WATER PUMPS



**US MOTOR WORKS**

#### THERMOSTATS



#### FAN CLUTCHES/REBUILD KITS/FAN BLADES



**KIT MASTERS**  
FAN CLUTCH EXPERTS

#### BELTS AND HOSES



**Continental**  
ContiTech

#### MOTOR MOUNTS/KITS



#### **OEM** TENSIONERS AND PULLIES



**DAYCO®**

#### **NEW** BULL GEARS



\*USE OF OTHER MANUFACTURER'S NAMES, PART NUMBERS, OR TRADEMARKS ARE SOLELY USED FOR INFORMATIONAL/IDENTIFICATION PURPOSES.

## EXHAUST PARTS

CURVES



FLEX PIPE



MUFFLERS



BAND CLAMPS



BRACKETS



U BOLT CLAMPS



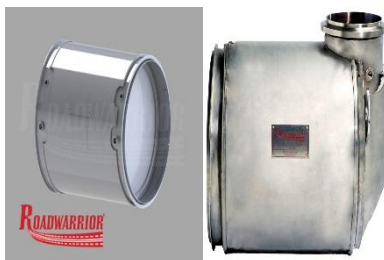
ELBOWS



VEHICLE SPECIFIC  
EMISSIONS EXHAUST



DPF & DOC CATALYSTS



OEM STYLE VEHICLE SPECIFIC EXHAUST PIECES



### FLUIDS/GREASES

#### ENGINE OILS



#### HYDRAULIC FLUIDS



#### OIL STABILIZERS



#### INJECTOR CLEANERS



#### FUEL TREATMENTS



#### RADIATOR ADDITIVES



#### DEF



#### ANTI FREEZE



#### GEAR OILS



#### SEMI-FLUID GREASE



#### HI TEMP GREASES



#### TRANSMISSION FLUIDS

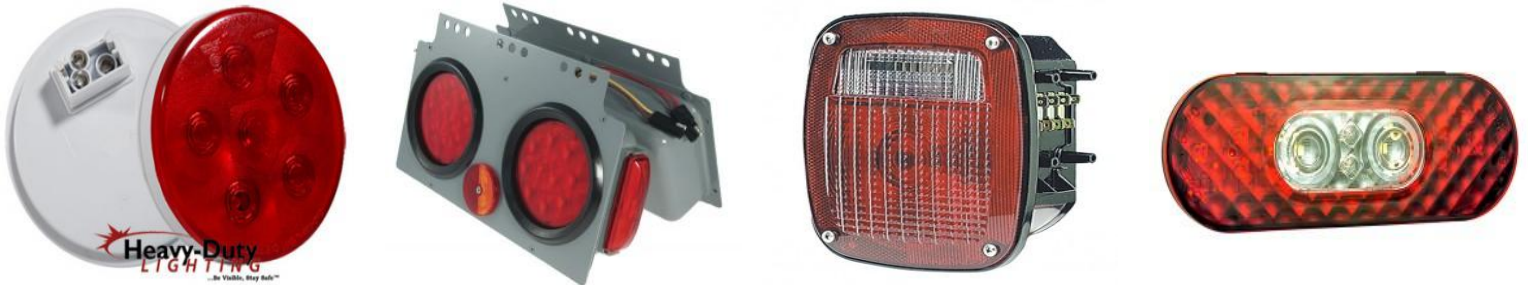




\*USE OF OTHER MANUFACTURER'S NAMES, PART NUMBERS, OR TRADEMARKS ARE SOLELY USED FOR INFORMATIONAL/IDENTIFICATION PURPOSES.

## LIGHTING

### STOP/TAIL/TURN



### MARKERS/LICENSE PLATE/ BACK UP LIGHTS

### VEHICLE SPECIFIC LIGHTS



### FLOOD/SPOT/WORK LIGHTS

### LIGHT BARS



### LIGHTING

#### LED FLASHERS



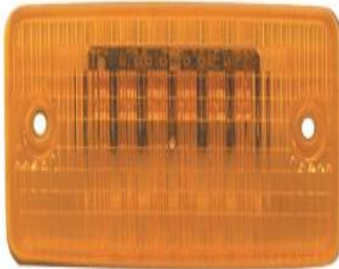
#### CLEARANCE MARKERS



#### CAB LIGHTS



#### CAB MARKER LIGHTS



#### SURFACE MOUNT CLEARANCE LIGHTS



#### BAR LIGHTS



#### GROMETS



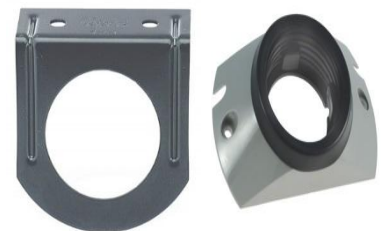
#### PIGTAILS



#### ABS LIGHTS



#### LIGHT BRACKETS





## SAFETY

### CONES/FLARE KITS



### SAFETY VEST



### HARD HATS



### WORK GLOVES



### FIRE EXTINGUISHERS



### EYES AND EARS



### RESPIRATORS



### STROBES/LIGHTBARS



### LED ROAD FLARE KITS



### LOGGER LIGHTS



### FLAGS/SIGNS



### CONSPICUITY TAPE



### BACKUP ALARMS



### SUSPENSION

AIR SPRINGS



AIR SPRING PEDALS



FRAME BRACKETS/SUSPENSION HANGERS



OEM HEIGHT CONTROL VALVES



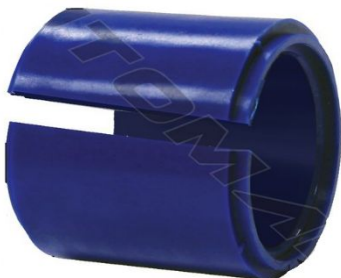
SHACKLE KITS/ SPRING PINS



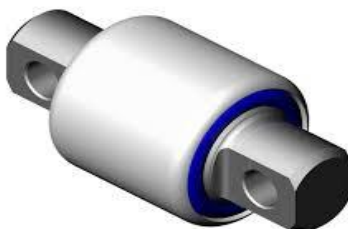
OEM FRONT/REAR SPRINGS



SWAY BAR BUSHINGS



TORQUE ROD BUSHINGS



SWAY BARS



TORQUE RODS



\*USE OF OTHER MANUFACTURER'S NAMES, PART NUMBERS, OR TRADEMARKS ARE SOLELY USED FOR INFORMATIONAL/IDENTIFICATION PURPOSES.

## SUSPENSION

### TRUNIONS



### RUBBER/POLY SUSPENSION PARTS



### TOP/BOTTOM U BOLT PLATES



### U BOLT KITS



### INSULATOR BOXES/PADS



### WHEEL STUDS/NUTS



### BUSHING ASSEMBLIES



### LOAD CUSHIONS



### MACK SPINDAL



### TRUNNION STANDS



### OEM SHOCKS



### SHOCK BRACKETS





### SHOP SUPPLIES

#### BRAKE CLEANERS



#### SHOP TOWELS



#### SPILL SUPPLIES



#### POWER WASHERS



#### WASH/POLISHES



#### PERMATEX SHOP SUPPLIES



#### SHOP LIGHTS



#### FLASHLIGHTS



#### ENERGIZER BATTERIES



## SHOP TOOLS

### AIR IMPACT WRENCHES



### BRAKE DRUM CARRIER



### SHOP DOLLY



### AIR RACHETS/GRINDERS



### BENCH GRINDERS



### ALUMINUM FLOOR JACKS



### TRANSMISSION JACKS



### PARTS WASHERS



### CREEPERS/SEATS



### AXLE JACKS



### BOTTLE JACKS





### SHOP TOOLS

#### TRUCK RAMPS



#### WASTE DISPOSAL



#### FLUIDS/GREASE PUMPS



#### AXLE OIL DRAINS



#### SLACK ADJUSTER TOOLS



#### HOSE REELS



#### AXLE NUTS



#### FILTER WRENCHES



#### BOOSTER BOOSTERS



#### BATTERY CHARGERS



#### BATTERY TENDERS



#### HAND TOOLS



## TRAILER PARTS

### EQUALIZERS



### OEM SPRINGS



### OEM AIR SPRINGS



### OEM HEIGHT CONTROL VALVES



### SUSPENSION PEDALS



### OEM BUSHING KITS



### PIVOT CONNECTION KIT



### SUSPENSION HANGERS



### AIR/ELECTRICAL VALVES



### GLAD HANDS



### OEM COMPLETE TRAILER AXLES



### TRAILER PARTS

TRAILER HUBS



BRAKE SHOE KITS



TRAILER WHEEL SEALS



TRAILER CAMSHAFTS



CAMSHAFT REPAIR KITS



BEARINGS/RACES



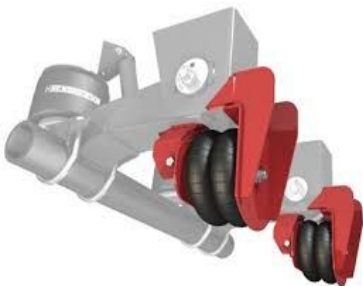
OEM TRAILER SHOCKS



PLACARDS



LIFT AXLE KITS



TIRE INFLATION SYSTEMS



TRAILER FLOORING



TOOL BOXES





## TRAILER LOAD SECUREMENT

### STRAPS



### CHAINS



### BINDERS



### WINCHES/ WINCH BARS



### D-RINGS



### EDGE PROTECTORS



### CARGO BARS



### CONTAINER LOCKS



### TARP STRAPS



### H.D. ALLUMINUM RAMPS/LOAD LEVELERS

